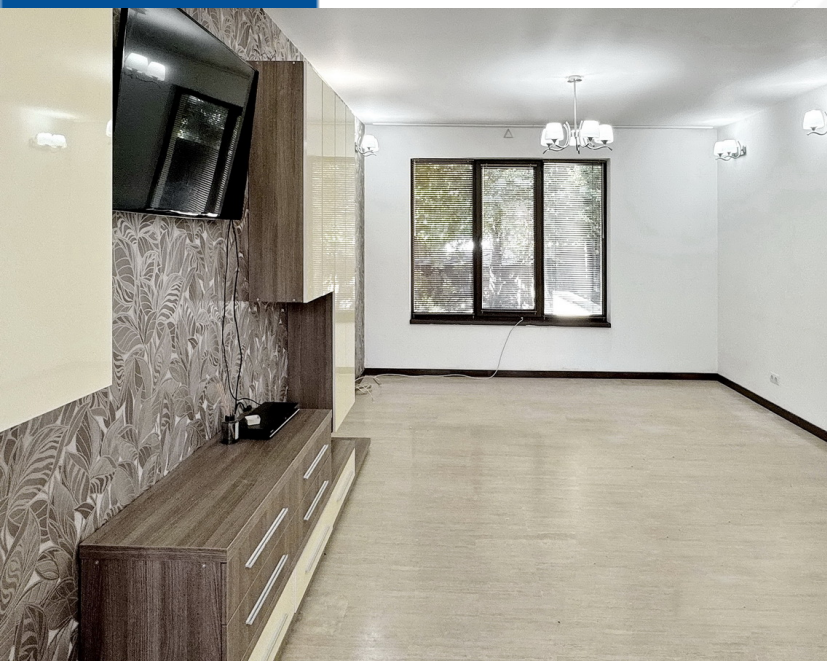




FAMILY TYPE



Centru, Sacele, Brasov

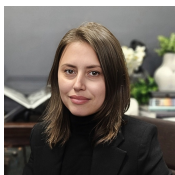
Pretabil atat comercial cat si locuit

PRET INCHIRIERE

3.900 €

CONTACT

Broker Marina Gavrilă
Telefon 0730177221
E-mail marina.gavrila@svn.ro
Adresa Str. Duiiliu Zamfirescu, nr. 5,
Sector 1, 011811, Bucuresti



[linkedin.com/company/residentialist-by-svn-romania](https://www.linkedin.com/company/residentialist-by-svn-romania)

[instagram.com/residentialist.ro](https://www.instagram.com/residentialist.ro)

www.residentialist.ro

DESPRE PROPRIETATE

✓ Cea mai buna oferta ✓ Oferta recenta

Nr. camere	9
Compartimentare	-
An constructie	2012
Nivel	D + P + 2 + M
Suprafata	550 mp
Bai	7
Balcoane	4
Parcari	4